

Customer :

customer

Customer part :

customer part

Comment :

Comment

S1=12.18

S2=9.08

Tmax=416

Tp S2=455.0

PI=0.57

HI=441

Sample =757.35

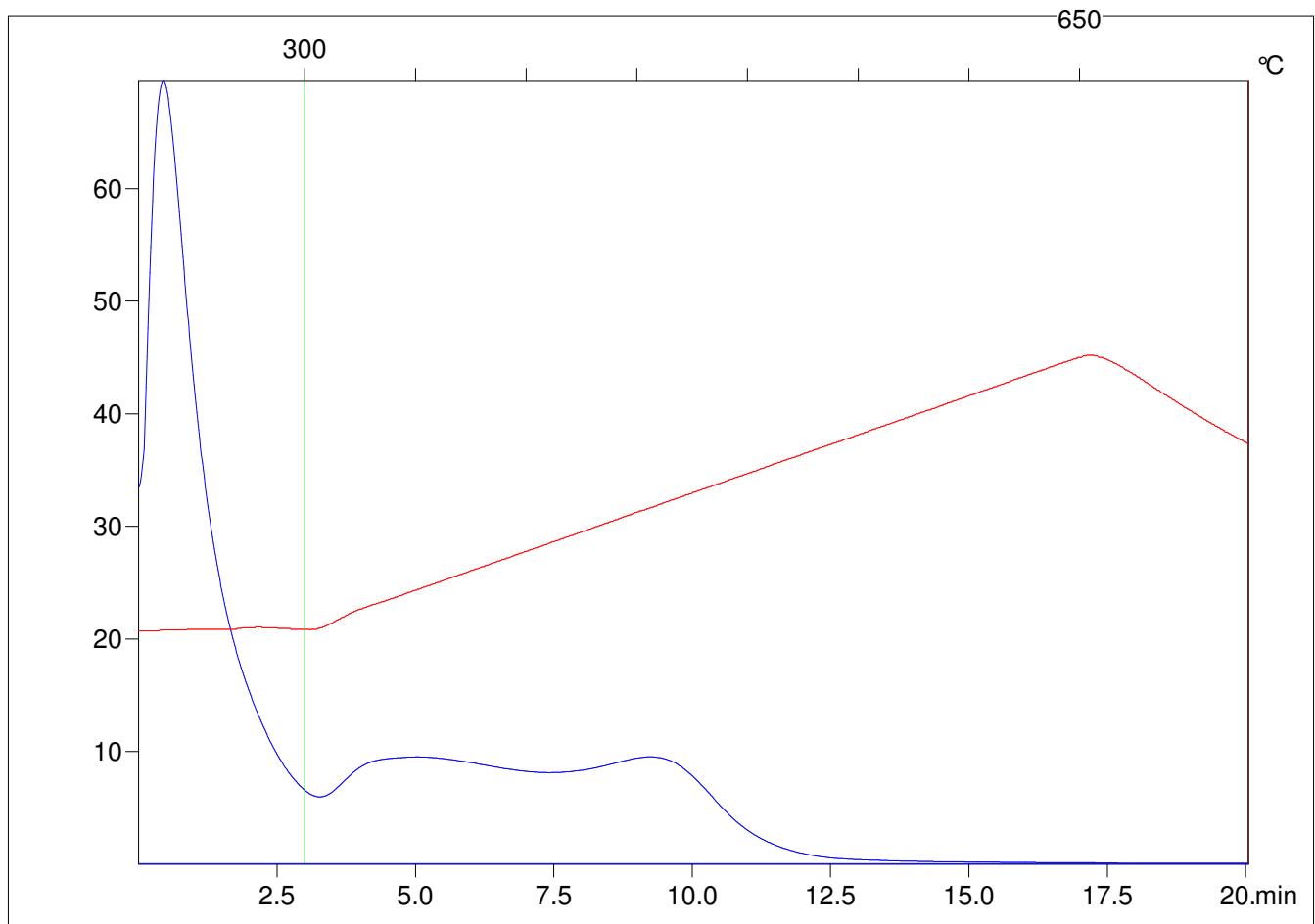
Method =Bulk Rock

Cycle=Basic

KFID(10*9)=1550

Qty =70.0

TOC=2.06



C:\VINC\PK130315\PK013.R00 : FID pyrolysis graphic

State

Pyro Status

Oxi Status